



CISOLIFT

CH9345E

Electric Telehandler

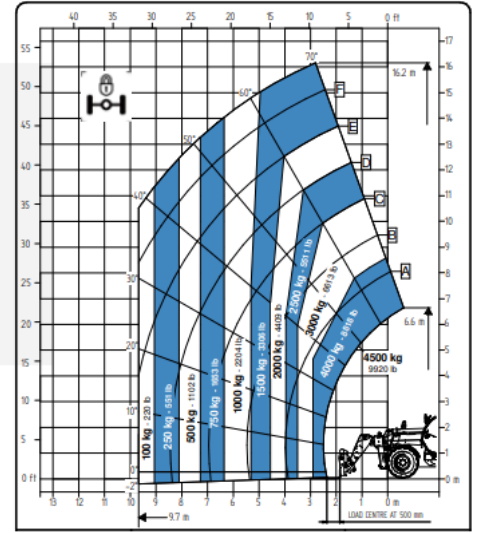
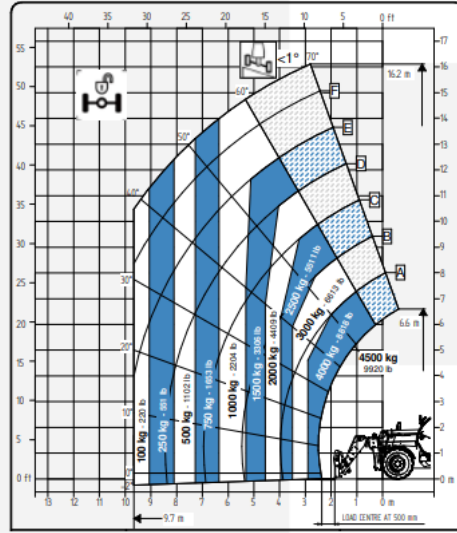
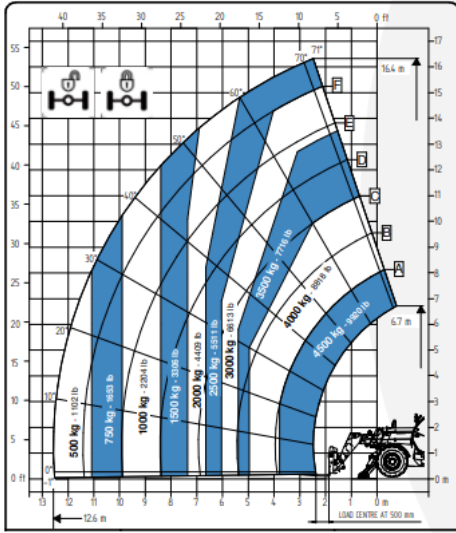
The Cisolift CH9345E model is a robust and efficient **electric** telescopic handler, ideal for demanding construction sites requiring high lifting capacity and increased reach.

- Zero emission
- 4-wheel drive with 3 steering modes
- Ergonomic cab for optimal comfort and visibility
- Tight turning radius for excellent maneuverability



CISOLIFT

LOAD CHARTS



TECHNICAL FEATURES

Lifting Height	44'7"	13.6 m
Max Horizontal Boom Extension	31'11"	9.73 m
Lifting Capacity	4,200 kg	9,259 lbs
Length	20'9"	6.32 m
Width	7'7"	2.31 m
Height	8'2"	2.5 m
Width With Stabilizers	11'	3.42 m

Lithium Battery	45 kW/h (105 Ah)	
Speed	15 mph	
Turning Radius	13'1"	4 m
Wheels	405/70 20	
Hydraulic Capacity	31.7 gal / 3,626 psi	
Controls	Proportional	
Weight	11 450 kg	24,243 lbs