



# CISOLIFT

## CH1054E

Electric Telehandler

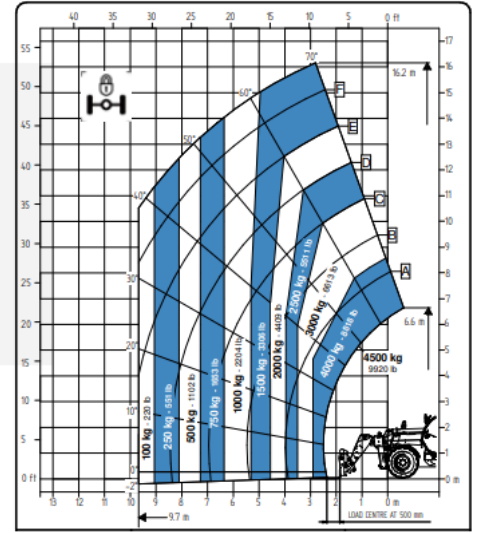
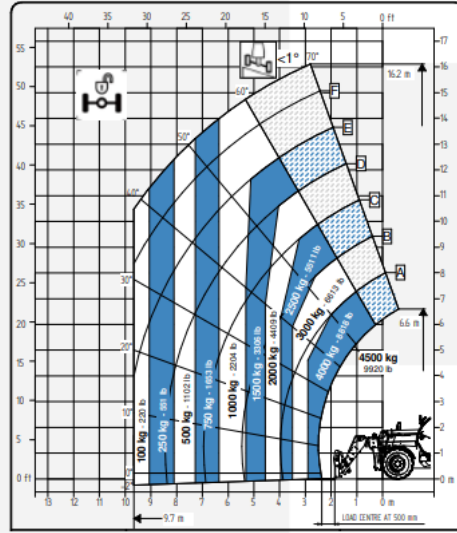
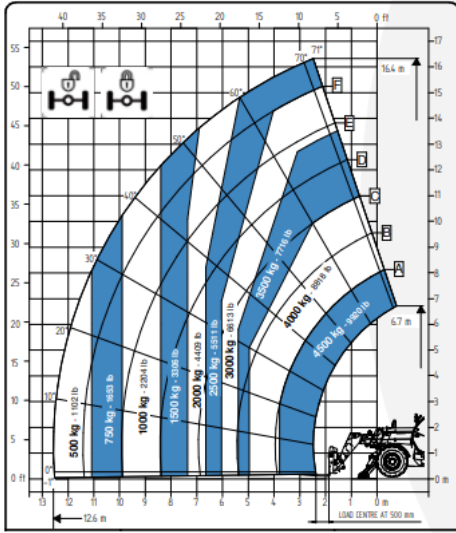
The Cisolift CH1054E model is a robust and efficient **electric** telescopic handler, ideal for demanding construction sites requiring high lifting capacity and increased reach.

- Zero emission
- 4-wheel drive with 3 steering modes
- Ergonomic cab for optimal comfort and visibility
- Tight turning radius for excellent maneuverability



CISOLIFT

# LOAD CHARTS



# TECHNICAL FEATURES

Lifting Height	53'10"	16.4 m
Max Horizontal Boom Extension	41'3"	12.59 m
Lifting Capacity	4,500 kg	9,920 lbs
Length	21'5"	6.52 m
Width	7'9"	2.36 m
Height	8'5"	2.56 m
Width With Stabilizers	11'	3.42 m

Lithium Battery	45 kW/h (105 Ah)	
Speed	15 mph	
Turning Radius	13'1"	4 m
Wheels	405/70 20	
Hydraulic Capacity	32.7 gal / 3,626 psi	
Controls	Proportional	
Weight	12,100 kg	26,676 lbs